

le Etniche

le Etniche

ANTICHE
TERRE
FIORENTINE
Etnika

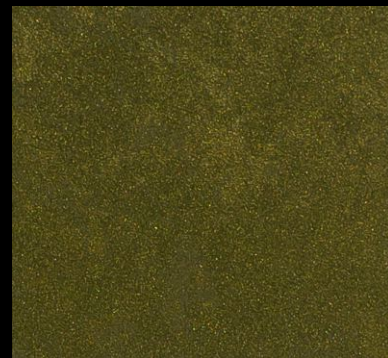




ORO ANTICO SOFT TONE
(50% ORO ANTICO + 50% Argento Light)



ORO ANTICO



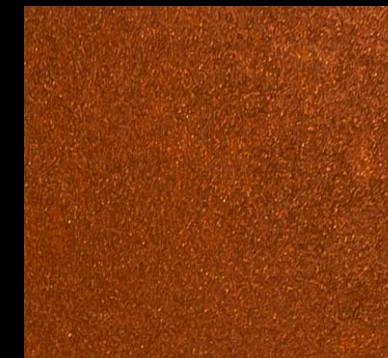
ORO ANTICO + 1 Toner col. 45



RAME FIAMMINGO SOFT TONE
(50% RAME FIAMMINGO + 50% Argento Light)



RAME FIAMMINGO



RAME FIAMMINGO + 1 Toner col. 47



ORO ANTICO + 1 Toner col. 47



ORO ANTICO + 1 Toner col. 41



ORO ANTICO + 1 Toner col. 37



RAME FIAMMINGO + 1 Toner col. 42



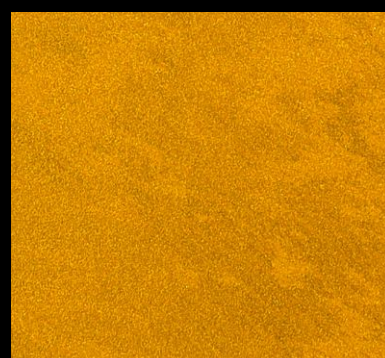
RAME FIAMMINGO + 1 Toner col. 45



RAME FIAMMINGO + 1 Toner col. 46



ORO RINASCIMENTALE SOFT TONE
(50% ORO RINASCIMENTALE + 50% Argento Light)



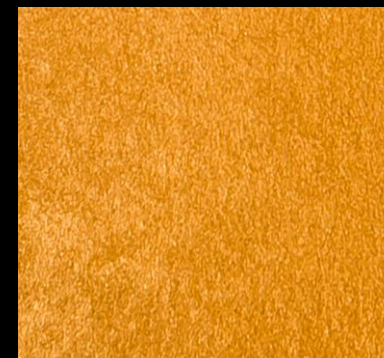
ORO RINASCIMENTALE



ORO RINASCIMENTALE + 1 Toner col. 41



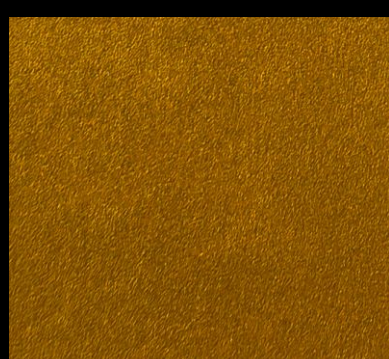
BRONZO ETNICO SOFT TONE
(50% BRONZO ETNICO + 50% Argento Light)



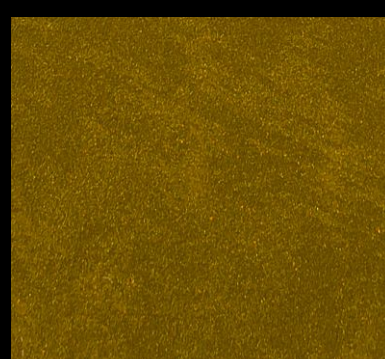
BRONZO ETNICO



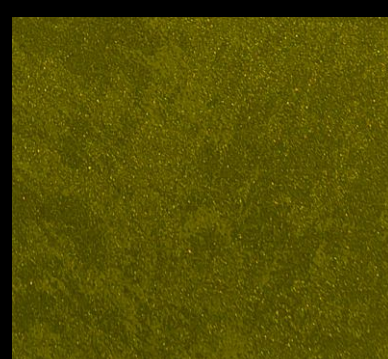
BRONZO ETNICO + 1 Toner col. 47



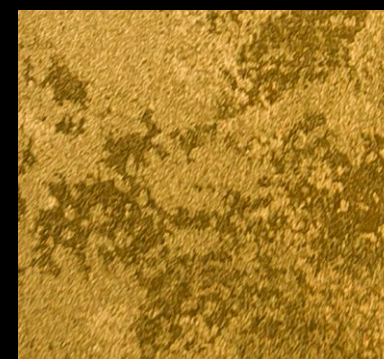
ORO RINASCIMENTALE+ 1 Toner col. 44



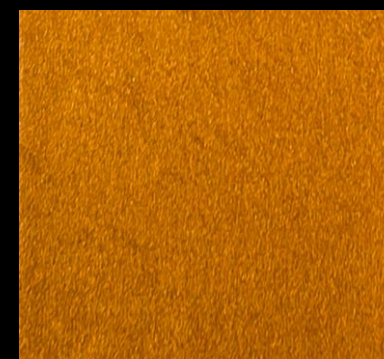
ORO RINASCIMENTALE + 1 Toner col. 36



ORO RINASCIMENTALE + 1 Toner col. 45



BRONZO ETNICO + 1 Toner col. 45



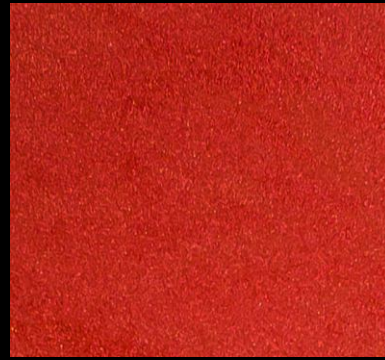
BRONZO ETNICO + 1 Toner col. 41



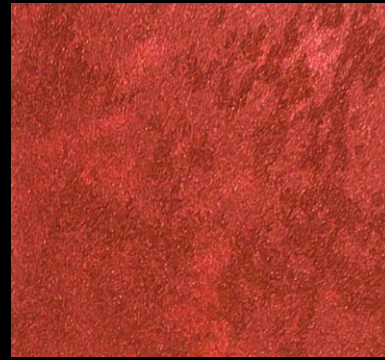
BRONZO ETNICO + 1 Toner col. 36



ROSSO PURO SOFT TONE
(50% ROSSO PURO + 50% Argento Light)



ROSSO PURO



ROSSO PURO + 1 Toner col. 45



ROSSO PURO + 1 Toner col. 42



ROSSO PURO + 1 Toner col. 47



ROSSO PURO + 1 Toner col. 46



ROSSO PURO



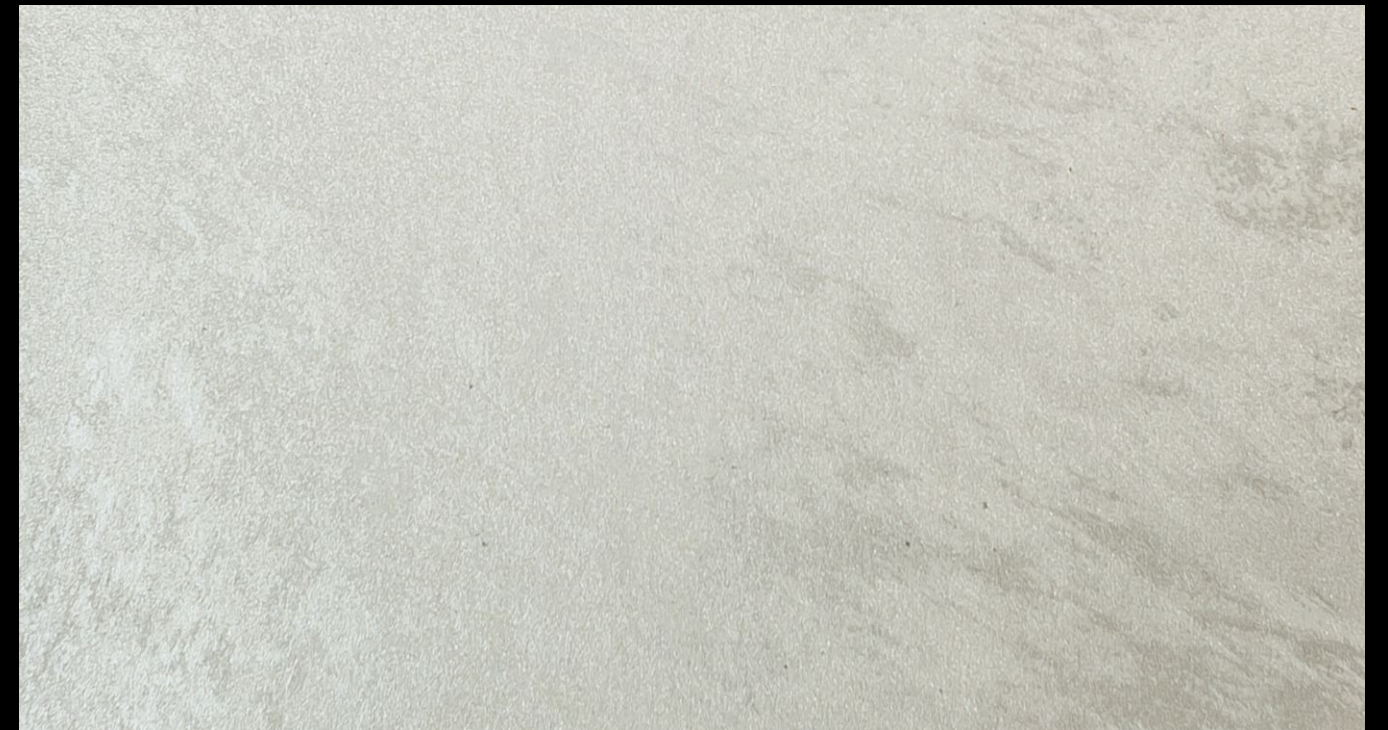
ARGENTO ANTICO SOFT TONE
(50% ARGENTO ANTICO + 50% Argento Light)



ARGENTO ANTICO



ARGENTO ANTICO + 1 Toner col. 41



ARGENTO LIGHT



ARGENTO ANTICO + 1 Toner col. 39



ARGENTO ANTICO + 1 Toner col. 47



ARGENTO ANTICO + 1 Toner col. 45

Etnika Silver Light can be applied just like the existing Etnika bases, without the addition of the toners or it can be mixed, in the amount of 50% with the existing Etnika colors thus creating new, lighter and fascinating color tones shades. If mixed with other existing Etnika colors, creating Etnika Soft Tone, we advise a 50% mixing ratio (half, in weight, Etnika Silver Light and half, in weight, of any other Etnika color chosen from the color card). Mix thoroughly with a drill the two Etnika bases and the toner (if one is chosen) until a homogeneous tint is achieved. Proceed with the application in the usual way following the instructions on the back of the color card. The application will be done on ATF base coat, white or tinted previously applied on the surface.



